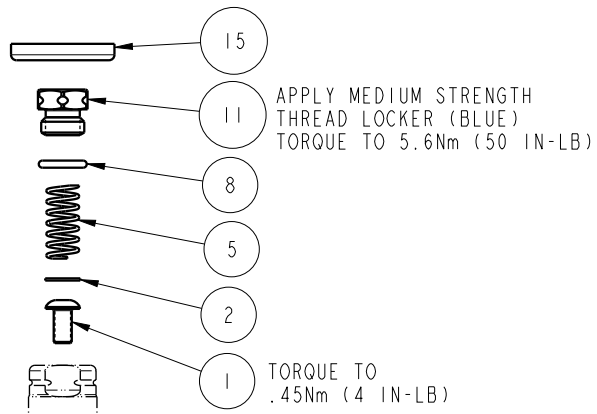
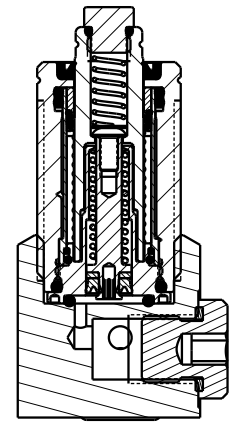




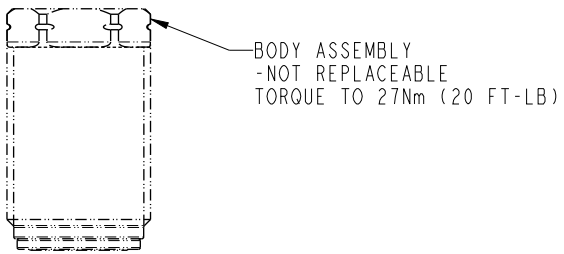
SEE IS1023 FOR SERVICE INSTRUCTIONS.
LUBRICATE ALL SEALS WITH CLEAN HYDRAULIC OIL
PRIOR TO ASSEMBLY.
DO NOT USE SILICONE BASED LUBRICANTS.



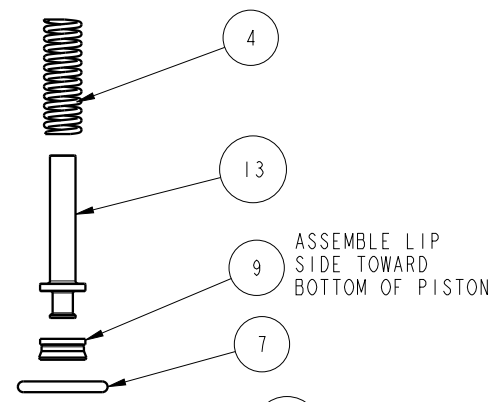
APPLY MEDIUM STRENGTH
THREAD LOCKER (BLUE)
TORQUE TO 5.6Nm (50 IN-LB)

TORQUE TO
.45Nm (4 IN-LB)

PLUNGER
These work supports are fully
rebuildable to full factory original
capacity by any authorized Vektex repair
facility. All seals can be replaced by
any authorized repair facility.

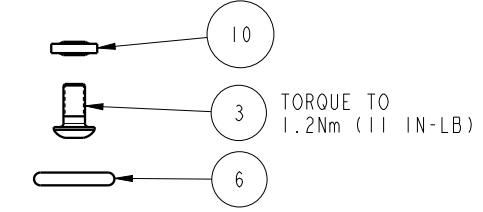
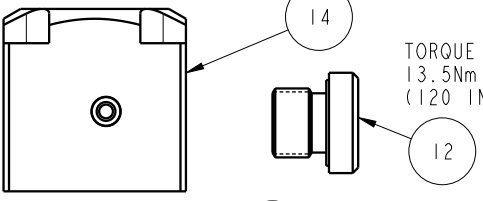


BODY ASSEMBLY
-NOT REPLACEABLE
TORQUE TO 27Nm (20 FT-LB)



ASSEMBLE LIP
SIDE TOWARD
BOTTOM OF PISTON

TORQUE TO
13.5Nm
(120 IN-LB)



TORQUE TO
1.2Nm (11 IN-LB)

NO	QTY	PART NO	DESCRIPTION	STD SEAL KIT	SPRING KIT
1	1	21410129	BHCS, 3-48 x 3/16, SELFLOCK, SST		
2	1	21430043	WASHER		
3	1	21500019	SCREW, CAP, BTNH, M3 X 6, ALY		
4	1	23350141	SPRING, COMPRESSION		X
5	1	23350142	SPRING, COMPRESSION		X
6	1	39050042	O-RING, (-011)	X	
7	1	39051171	O-RING, 9.53mm X 1.55mm	X	
8	1	39051172	O-RING, 4.7mm X 1.0mm	X	
9	1	39052071	SEAL, U-CUP & BU RING, 2.63 X 1.53 X 2.03, 85, AU	X	
10	1	39055011	SEAL, BONDED, M3		
11	1	41010837	BOLT, CONTACT, WS, FA, HC, 4.4kN		
12	1	43068004	PLUG, SOCH, G1/8		
13	1	81010402	PISTON, WS, FA, HC, 1000		
14	1	91040615	KIT, BASE, WS, FA, MM, HC, 4.4kN		
15	1	39V53004	WIPER, PRESS-IN, (3/8), VBGV	X	
N/A	N/A	60100152	KIT, SEAL, WS, FA, BM, HC, 4.4kN	NOTED	N/A
N/A	N/A	61100226	KIT, SPRING, WS, FA, HC, 1000	N/A	NOTED
N/A	N/A	IS1023	INSTRUCTION SHEET	N/A	N/A

PARTS LIST



B	4993	RELEASE	RLK	12/7/22
REV	IN ACCORDANCE WITH ECN	EFFECTIVE DATE	REVISED BY	DATE
DRW BY:	RLK	DRAWING STATUS: Released		
DATE:	11/22/21	PRODUCTION APPROVED FOR RELEASED STATUS ONLY		

ASSEMBLIES AFFECTED
41080420

PARTS LIST, ASSY, WS, FA, BM, HC, 4.4kN

SIZE A MPL1075 REV B

FORM FEG035_PL_ASIZE, REV. B

SHEET 1 OF 1